



About SLM Financial and Sallie Mae®

SLM Financial, a Sallie Mae company, provides education financing services for career training, K-12 education, part-time education, and distance learning as well as an array of consumer credit loans in most states. Career Training Loans are made by state or federally chartered financial institutions and are sold after full disbursement to a Sallie Mae company. Sallie Mae is the nation's leading provider of education funding, managing student loans for more than 7 million borrowers.

Questions? Call 1-888-2-SALLIE or go to www.slmfinancial.com

APR Example for Borrower with Excellent Credit and No Deferment: If you borrow \$6,630, which includes your 2% loan fee of \$130, and if the variable rate on your loan remains at 5% during repayment, then you would make 180 monthly payments of \$52.43. The APR on your loan would be 5.30%. If you chose the deferment option, you would make 12 monthly payments of \$10, followed by 180 monthly payments of \$56.17, and your APR would be 5.76%. The amount you would owe at repayment would be \$6,630 (\$6,875 for deferment option). This example uses an interest rate of 5% (5.50% for deferment option) based on a Prime Rate of 4% as of April 7, 2004, plus a margin of 1% (1.50% for deferment option). It assumes the APR does not change, but the APR on your loan may vary if the Prime Rate varies.

APR Example for Borrower with Good Credit and No Deferment: If you borrow \$6,825, which includes your 5% loan fee of \$325, and if the variable rate on your loan remains at 7% during repayment, then you would make 180 monthly payments of \$61.35. The APR on your loan would be 7.79%. If you chose the deferment option, you would make 12 monthly payments of \$10, followed by 180 monthly payments of \$69.29, and your APR would be 8.68%. The amount you would owe at repayment would be \$6,825 (\$7,251 for deferment option). This example uses an interest rate of 7% (8% for deferment option) based on a Prime Rate of 4% as of April 7, 2004, plus a margin of 3% (4% for deferment option). It assumes the APR does not change, but the APR on your loan may vary if the Prime Rate varies.

APR Example for Borrower with Fair Credit and No Deferment: If you borrow \$7,085, which includes your 9% loan fee of \$585, and if the variable rate on your loan remains at 13% during repayment, then you would make 180 monthly payments of \$89.64. The APR on your loan would be 14.70%. If you chose the deferment option, you would make 12 monthly payments of \$10, followed by 180 monthly payments of \$105.97, and your APR would be 15.35%. The amount you would owe at repayment would be \$7,085 (\$7,957 for deferment option). This example uses an interest rate of 13% (14% for deferment option) based on a Prime Rate of 4% as of April 7, 2004, plus a margin of 9% (10% for deferment option). It assumes the APR does not change, but the APR on your loan may vary if the Prime Rate varies.

Apply online at www.slmfinancial.com



or call 1-888-2-SALLIE



SLM003



INVEST IN YOUR FUTURE

With Affordable Loans for
Career Training and Information Technology Training

For tuition and expenses

Low interest rates and fees

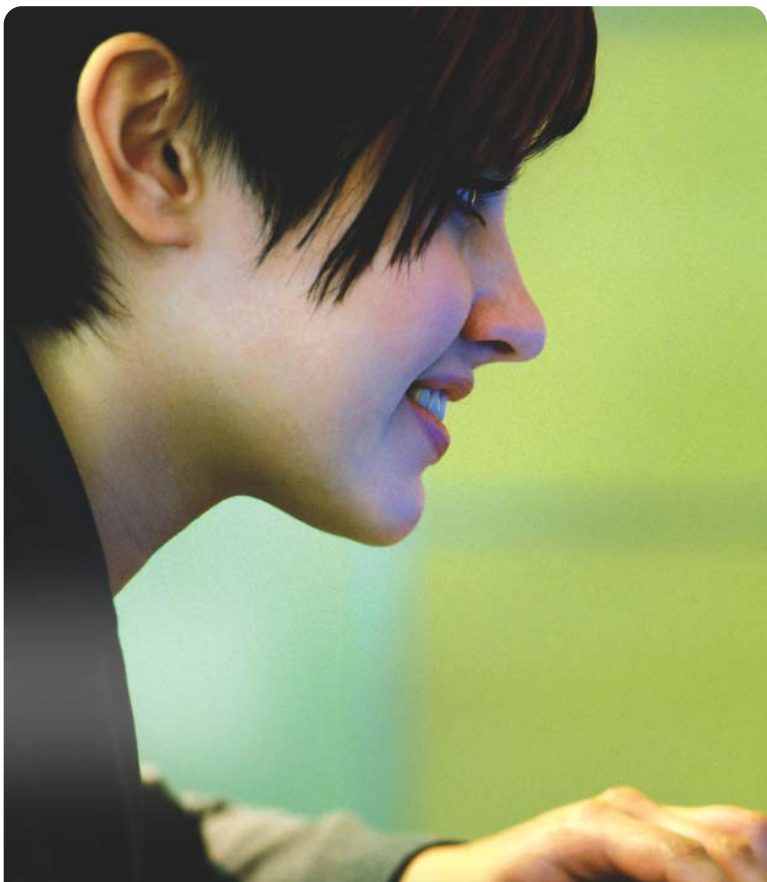
High loan limits

Extended repayment terms available

NEW DEFERMENT OPTION!



Apply online today at www.slmfinancial.com



THE TRAINING YOU NEED AT A COST YOU CAN AFFORD

If you need training to advance or change your career, don't let cost prevent you from achieving your goals. The Career Training Loan® from SLM Financial makes career and IT training affordable, whether you are attending a 2- or 4-year college, going to school full- or part-time, or participating in a specialized training program. The Career Training Loan can save you money compared with other financing options.

Save money with our low interest rates and fees

The lower your loan's interest rate, the less your total education will cost, and the more you'll save in the long run. With a Career Training Loan, you can save over the life of your loan with variable rates as low as Prime + 1% and fees as low as 2% for borrowers with excellent credit who do not defer payments while in school (see APR examples on back panel).

Our interest rates are structured so that you get the best possible terms based on your credit history.

Borrow for both tuition and expenses

You can borrow from a minimum of \$1,000 up to the full cost of your education, less other aid received. That includes tuition and expenses such as books, fees, a computer, and living expenses. Up to 60% of the tuition amount is allowable for expenses, not to exceed \$6,000. Terms may vary by program. A portion of the tuition must be financed to be eligible to apply for expenses.

Keep your payments affordable with up to 15 years to repay

With our 15-year repayment terms, you can keep your monthly payments low and affordable. You can also prepay your loan, either in part or in full, at any time to lower your total loan cost, with no prepayment penalty. Minimum monthly payment is \$30 (see APR examples on back panel).

New deferment option available

At SLM Financial, we understand the difficulty of balancing work and education while you are in school. For this reason, we have created a new 12-month deferment repayment option for qualified borrowers. During the deferment period, you will be required to pay only \$10 per month. This \$10 payment will be applied toward the interest that accrues

on your account during the deferment period. Unpaid interest will be added to your loan amount (capitalized) at the end of the deferment period. You will then pay interest on a higher amount.

This new deferment option lets you focus on your studies rather than your loan payment while you are attending school. And afterwards, you may still have up to 15 years to repay (see APR examples on back panel).*

Fast decisions, excellent servicing

You can apply for a Career Training Loan online and get a decision usually in less than a minute. You can also manage your loans online and have convenient telephone access to expert customer service should you have any questions about your loan.

Apply with a co-borrower and save

If you have no credit or a poor credit history, you may still qualify for a loan by applying with a creditworthy co-borrower. That's because when you have a creditworthy co-borrower with a credit rating that is better than yours, it can lower your interest rate and fees.

And after you make 24 consecutive, on-time payments of principal and interest, you may request to have your co-borrower removed from the loan. SLM Financial will then review your creditworthiness and, if you are approved, the co-borrower will be removed. Call 1-888-2-SALLIE to apply or receive more information.

*Terms may vary by school. Deferment available for most programs. Contact SLM Financial to see if you are eligible.

The school and its financial aid office act on their own behalf and do not represent you or SLM Financial. You should always contact SLM Financial directly if you have any questions about the terms under which Career Training Loans are made.

Sallie Mae is a registered service mark of Sallie Mae, Inc. Career Training Loan and SLM Financial Corporation are registered service marks of SLM Financial Corporation, SLM Corporation and its subsidiaries, other than the Student Loan Marketing Association, are not sponsored by or agencies of the United States. Sallie Mae, Inc. is a wholly owned subsidiary of the SLM Corporation.
Copyright 2004 by SLM Financial Corporation. All rights reserved. 6/04.

